

HAVING TROUBLE W/ YOUR SOUND SYSTEM?

CONDITION

No Sound (*power LED = OFF*)

No Sound (*power LED = ON*)

Shortened Battery Life

Distorted Sound

Excessive Hum or Noise

POSSIBLE CAUSE

- power switch is in OFF position
- batteries are fully discharged - LED may flash briefly
- no output from source
- input cable unplugged or input volume control is low or off
- cable plugged into switched speaker output without speaker
- short in external speaker cable or speaker
- total external speaker impedance < 4ohm
- batteries are not fully charged or need to be replaced
- poor connection on input cable
- input signal too strong
- input cable not shielded
- not using balanced microphone

HAVING TROUBLE W/ YOUR WIRELESS SYSTEM? (Wireless Models Only)

CONDITION

No Sound (*RX ON Indicator = ON*)

No Sound (*RX ON Indicator = OFF*)

POSSIBLE CAUSE

- wireless volume control is to low or off
- no mic plugged into belt-pack transmitter
- sound system not turned on
- transmitter power switch turned off
- low battery or no battery in transmitter
- transmitter and receiver are not on the same channel

NEED MORE HELP? View demonstration videos on proper system setup and operation at our website – <http://www.anchoraudio.com/liberty.php>

Anchor Audio Customer Service

888-444-6077

LIBERTY TECHNICAL SPECIFICATIONS

| | | | |
|-----------------------|---|-------------------------------------|---|
| Rated Power Output | 50 watts | Inputs | |
| Max SPL @ Rated Power | 117 dB Projection ON 107 dB Projection OFF | Microphone (2 universal) | Lo-Z (1 k ohm), balanced, XLR 12 VDC condenser mic, phantom pwr Hi-Z (10 k ohm), unbalanced, 1/4" |
| Batteries (two) | 12 Volt rechargeable, 9.0 AH | Auxiliary | Hi-Z (10 k ohm), unbalanced, 1/4" |
| Frequency Response | 60 Hz – 15 kHz ± 3 dB Proj OFF +10 dB from 1.5 – 12kHz Proj ON | Outputs | |
| Speaker Type | 8" titanium dome compression driver | Line (post fader) | Lo-Z (<1k ohm), buffered, 1/4" |
| AC Power Reqs. | 90 – 264 VAC, 50/60 Hz, 50W max | Speaker | switch: 8ohm/unswitch: 4ohm, 1/4" |
| Dimensions (HWD) | 22.5 x 13 x 10" / 57 x 33 x 25 cm | Sensitivity For Rated Output | |
| Weight | 44 pounds / 20 Kg | Lo-Z Microphone | -52 dBV (2.5 mVrms) |
| | | Hi-Z Microphone | -43 dBV (7.5 mVrms) |
| | | Auxiliary (line) | -14 dBV (200 mVrms) |

(Specifications subject to change without notice)



Anchor Audio, Inc.

Portable Sound Systems • Torrance, California



Liberty

Portable Sound System

OWNER'S MANUAL



CONTENTS

| | |
|---|-----|
| GETTING STARTED | 2 |
| SETTING UP YOUR LIBERTY SOUND SYSTEM | 2/3 |
| ELIMINATING FEEDBACK / SPEAKER STAND SETUP | 3 |
| LIBERTY SOUND SYSTEM BASIC OPERATION | 4 |
| CARING FOR & CHARGING YOUR BUILT-IN BATTERIES | 4/5 |
| OPERATING THE BUILT-IN CD PLAYER | 6 |
| OPERATING THE BUILT-IN UHF WIRELESS RECEIVER | 6 |
| OPERATING THE WIRELESS MICROPHONE / TRANSMITTER | 7 |
| HAVING TROUBLE W/ YOUR SOUND SYSTEM? | 8 |
| LIBERTY SOUND SYSTEM TECHNICAL SPECIFICATIONS | 8 |

A MESSAGE FROM THE OWNER

Thank you for choosing an Anchor Audio portable sound system. Our products incorporate state-of-the-art design and the finest quality of materials and workmanship. We're proud of our products and appreciate the confidence which you have shown by selecting an Anchor system.

I hope you'll take a few minutes to review this manual. We've incorporated several unique features into our products, and your knowledge of how to use them will enhance the performance and your enjoyment of the system.

David Jacobs, President
on behalf of all Anchor Employees

GETTING STARTED

Please check your new unit carefully for any damage which may have occurred during shipment. Each Anchor product is carefully inspected at the factory and packed in specially designed boxes for safe transport.

Notify the freight carrier immediately of any damage to the shipping box or product. Repack the unit in the original box and wait for inspection by the carrier's claim agent. Notify your dealer of the pending freight claim.

NOTE: All damage claims must be made with freight carrier!

RETURNING SYSTEMS FOR SERVICE OR REPAIR

For service or repair, please contact the dealer you purchased your system from or Anchor Audio Customer Service at (888) 444-6077 to obtain a RA (Return Authorization) number. All shipments to Anchor Audio must include an RA number and must be shipped prepaid. C.O.D. shipments will be refused and returned at your expense.

IMPORTANT: Save the shipping box & packing materials, they were specially designed to ship your unit!

WARRANTY REGISTRATION

Visit our website at www.anchoraudio.com and select "Warranty Registration". Complete the online form to activate the six-year limited warranty on your Liberty sound system and two-year limited warranty for the CD player and microphones.

SETTING UP YOUR LIBERTY SOUND SYSTEM

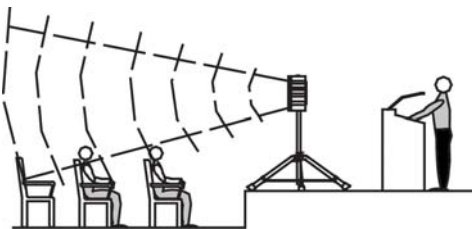
We recommend placing your sound system between the audience and the presenter, facing the audience and raised above their heads using a speaker stand or table. This benefits listeners in the rear of the crowd, minimizes the risk of overpowering those in the front and helps prevent feedback by keeping microphone users behind the sound system.

SINGLE SYSTEM PLACEMENT

Place your unit along the least trafficked aisle pointing towards the center of the audience.

MULTIPLE SYSTEM PLACEMENT

Place units along aisles pointing just off the audience center line, over the crowd's head. With the sound system placed properly it should provide sufficient coverage.

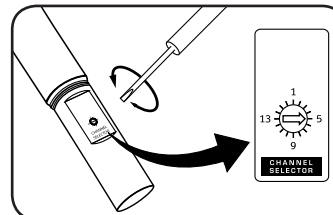


NOTE: The line-output feature can also be used to send the signal to a sound system in a different room or a separate recording device.

OPERATING THE WIRELESS MICROPHONE / TRANSMITTER

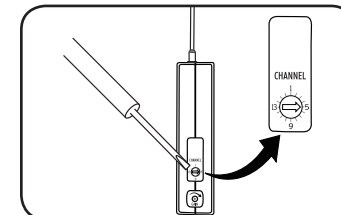
CHANNEL SELECTION - HANDHELD TRANSMITTER

1. Unscrew battery cover on bottom of microphone
2. Set the CHANNEL SELECTOR dial to match the channel setting of your receiver
3. Replace battery cover and tighten firmly



CHANNEL SELECTION - BODY-PACK TRANSMITTER

1. The channel selection dial is located on the side of the transmitter
2. Set the CHANNEL selection dial to match the channel setting of the receiver



NOTE: When using dual wireless, each microphone must be set to a different channel!

USING YOUR WIRELESS MICROPHONES

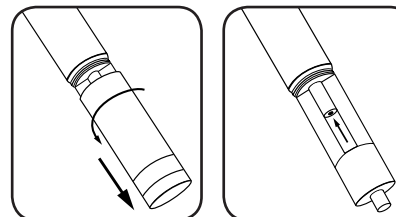
After you have set the transmitter channel (see above) you are ready to use your wireless microphone:

1. Body-pack transmitter users must insert the mic plug into the transmitter jack marked MIC
2. Turn the transmitter power switch to ON
(The red LED will flash when the mic is turned on. If the red LED stays on, the battery is low)
3. Turn the Liberty power switch to ON
4. The RX indicators will light (only one indicator will light at a time) when the wireless signal is being transmitted and received

CAUTION: Harmful feedback may occur when walking in front of a sound system or speaker with a wireless microphone. Always point microphone away from speakers!

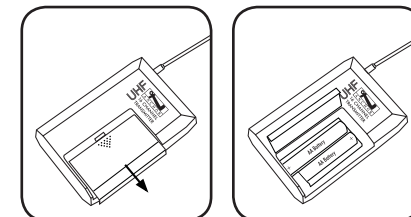
REPLACE BATTERY - HANDHELD TRANSMITTER

1. Unscrew battery cover on bottom of microphone
2. Replace old batteries with 2 fresh size 'AA' alkaline batteries
3. Replace battery cover and tighten firmly



REPLACE BATTERY - BODY-PACK TRANSMITTER

1. Slide open battery cover on front of transmitter
2. Replace old batteries with 2 fresh size 'AA' alkaline batteries
3. Replace battery cover by sliding firmly into place



NOTE: Transmitter power must be OFF when changing batteries!

DIVERSITY WIRELESS BY ANCHOR AUDIO

Anchor Audio UHF wireless is a 16 channel, diversity wireless system that receives signals with two independent antennae. With diversity wireless the receiver processes the stronger signal, effectively minimizing dropouts and interference from other transmitting sources. The antennae are mounted internally so there are no obstructions or risk of damage.

CHANNEL SELECTION - BUILT-IN RECEIVER

Before you can use your UHF wireless system, you will need to select a wireless frequency, set the built-in receiver, and microphone transmitter, to that channel.

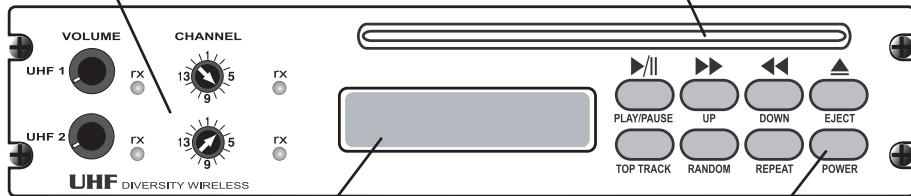
1. Choose from any of the 16 available wireless channels
2. Set the wireless channel selector knob "CHANNEL" to the channel/frequency you have chosen

If you have two wireless receivers repeat above for the second receiver. Remember each receiver/transmitter pair must be set to different channels for proper operation.

NOTE: Ongoing wireless interference? The frequency you selected may be in use by other systems in the area! Change channels until you find a clear frequency!

UHF WIRELESS CONTROLS

CD SLOT



CD PLAYER LCD DISPLAY

CD POWER ON/OFF

OPERATING THE BUILT-IN CD PLAYER

Your built-in CD player features 'direct-in' play, power loading, anti-shock/skip CD mechanism, repeat & random play, three beam laser tracking system and dual one bit D/A converters. By feeding the CD audio signal directly into the mixing bus the Liberty Sound System is able to create a crisp, clear composite output of all your system inputs.

CD PLAYER BASIC OPERATION

Insert a disc into the player by gently sliding it, label side up, into the CD slot. The player will automatically load and begin playback from the beginning of the disc. CD player controls are explained in detail below:

| | | | |
|-------------------|---|------------------|---|
| PLAY/PAUSE | Press to play a loaded CD. Press during playback to pause, press again to resume. | TOP TRACK | Press once to start playing the disc from the first track. |
| UP | Press once to advance CD to next track. Press and hold to fast forward on the current track. | RANDOM | Press for continuous, random track playback. Press again to resume normal play. |
| DOWN | Press once to go to previous track. Press and hold to fast backward on current track. | REPEAT | Press for continuous playback of the same track. Press again to resume normal play. |
| EJECT | Press to unload a disc from the player. If CD is not removed within 10 seconds it will be automatically reloaded into the player. | POWER | Press to turn the CD player on/off. The sound system will need to be turned off separately. |

CAUTION: To avoid noise at shut off, turn CD player off before you turn off the Liberty!

FEEDBACK

Feedback, a howling noise or shrill sound, is self-generated by the sound system. It's caused by a microphone picking up the sound coming from the speaker and then re-amplifying it. Once a feedback loop starts it continues until the system is adjusted.

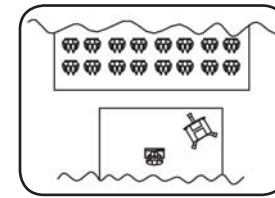
FEEDBACK CAUSES

- Microphone too close, pointing towards or in front of speaker
- Volume setting is too loud for room
- Sound reflecting off hard surfaces

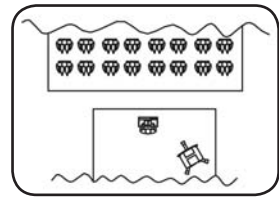
AVOIDING & ELIMINATING FEEDBACK

- Point microphone in a different direction
- Keep microphone away from the speaker
- Place speaker in FRONT of the microphone
- Reduce the sound system volume levels

CORRECT SYSTEM PLACEMENT



WRONG SYSTEM PLACEMENT



CAUTION: Feedback can damage your equipment & may be hazardous to hearing.

CONNECTING TWO OR MORE LIBERTY SOUND SYSTEMS

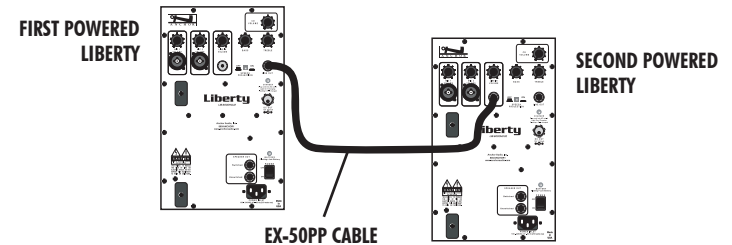
USING A LIBERTY UNPOWERED COMPANION SPEAKER (LIB-6001)

Connect one end of a speaker cable (SC-50) to the SPEAKER OUTPUT jack on the back of a powered Liberty sound system. Connect the other end to the jack labeled IN on the back of a Liberty unpowered companion speaker.

NOTE: AC power is not required for an unpowered companion speaker.

USING POWERED LIBERTY SOUND SYSTEMS

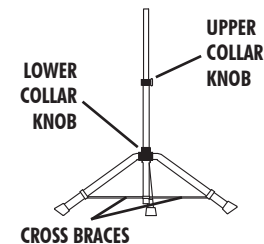
This method uses the line-output feature of your Liberty sound system. Connect a speaker cable (EX-50PP) from the LINE OUT jack on the first powered Liberty to the LINE IN jack on the second powered Liberty. Set the volume of the second Liberty to maximum so that full volume control will be at the first or primary sound system.



NOTE: The line-output feature can also be used to send the signal to a sound system in a different room or a separate recording device.

SPEAKER STAND SETUP

1. Loosen the Lower Collar Knob
2. Separate the stand legs until the leg support Cross Braces are parallel to the floor
3. Tighten the Lower Collar Knob



4. Loosen the Upper Collar Knob and extend the center pole
5. Adjust height and retighten the Upper Collar Knob
6. Place your Anchor sound system on the stand

BASIC SYSTEM OPERATION

NOTE: Fully Charge Batteries Before First Use!

1. Set all Input Level Controls to minimum & Tones Controls to flat or the middle setting before turning your system on
2. Plug a wired microphone into the MIC 1 or MIC 2 jacks and/or plug an audio source into the LINE-IN jack
3. Switch POWER to ON, the red BATTERY LED will light
4. Slowly increase the Level Control for the input jacks used to the desired volume
5. Set SPEECH PROJECTION to ON for speech applications or OFF for standard applications (*music & indoor use*)
6. Adjust BASS & TREBLE controls to desired sound quality

CARING FOR YOUR BUILT-IN BATTERIES

It is very important that you fully charge the batteries in your new sound system before the first time its used. To preserve battery life it is also recommended that batteries be fully charged as soon as possible after every use regardless of the length of operation.

UNDERSTANDING THE BATTERY LEVEL INDICATOR

LED Flashing Red: Battery charge is very low, in 15-30 minutes the Battery Protection Circuit will turn the system off.

LED Off: Battery is completely drained and must be charged.

NOTE: System Can Be Used While Batteries Charge!

OPERATING IN AC MODE

Plug your sound system into an AC outlet. Operate as normal while charging the built-in batteries at the same time. The Charger LED will light during charging and flash when the battery is fully charged.

BATTERY SERVICE TIME

With the batteries fully charged you can expect approx.:

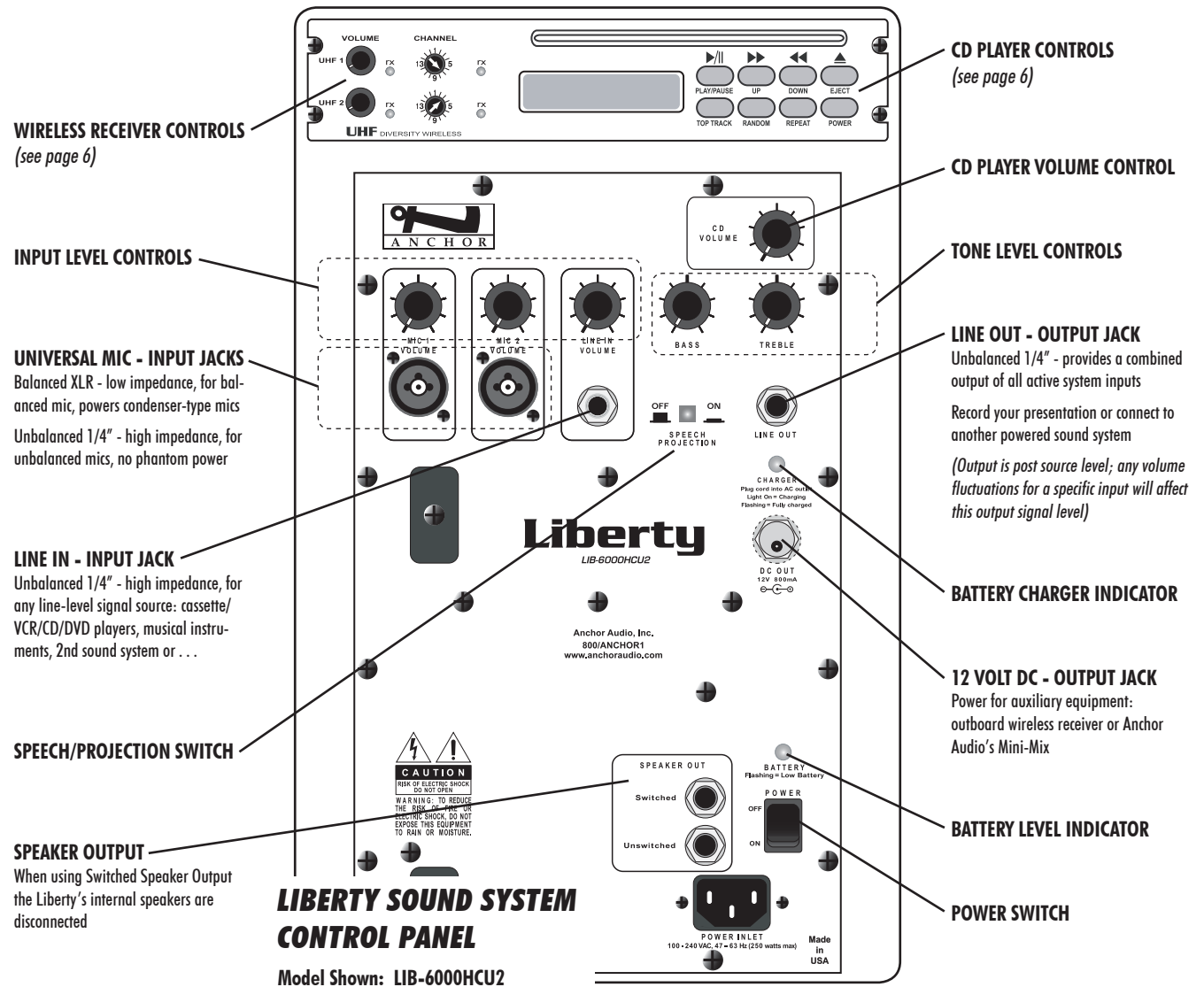
6-8 hrs @ Medium Volume 2-4 hrs @ Full Volume

Of continuous music input (*longer for speech*). Service time will vary depending on control settings and use of accessories (*built-in CD player, wireless receivers and/or a companion speaker*).

IMPORTANT: Always Store Your System w/ Batteries Fully Charged!

SYSTEM STORAGE & BATTERIES

Always store your sound system with the batteries fully charged. For extended periods of storage leave the system plugged into an AC outlet. If this is not possible, charge the system at least once each month for a minimum of 24 hours.



CHARGING YOUR BUILT-IN BATTERIES

An automatic charging system is built-in to your Liberty Sound System. It is designed to properly charge and maintain the systems built-in batteries. To charge batteries:

1. Plug the power cord into your sound system
2. Plug the other end of the cord into AC outlet
Charger LED will stay on during charging
3. Batteries will fully charge in approx. 6-8 hrs
Charger LED will flash

When in AC mode the system automatically transfers power from the battery charger to the power amplifier at high volume output, causing the Charger LED to flicker.

SPEECH PROJECTION SWITCH SETTINGS

Allows you to customize the sound output of your Liberty system for specific applications:

Speech Projection Off (button out): A flat, full range frequency response for music or indoor voice applications.

Speech Projection On (button in): Frequencies in the vocal range are boosted for added clarity and efficient sound projection. Use this setting for outdoor functions, large crowds and speech applications.