

HAVING TROUBLE W/ YOUR SOUND SYSTEM?

CONDITION

No Sound (power LED off)

Charge Indicator LED off
No Sound (power LED on)

Shortened Battery Life

Distorted Sound
Excessive Hum or Noise

POSSIBLE SOLUTION

- turn POWER switch ON
- charge battery or plug in AC cord
- leave plugged in for 48 hours to repair battery
- check for output from source
- make sure all cables are completely plugged in
- turn up volume control of input used
- remove plug from speaker output if not using external speaker output
- charge battery fully; if battery life continues to deteriorate, contact Anchor Audio customer service: (888) 444-6077
- lower system volume control
- use shielded cables
- use balanced microphone

HAVING TROUBLE W/ YOUR WIRELESS SYSTEM? (WIRELESS MODELS ONLY)

CONDITION

No Sound (RX Indicator: ON)

No Sound (RX Indicator: OFF)

POSSIBLE SOLUTION

- set MUTE switch to on (handheld mic only)
- turn up WIRELESS volume control
- make sure mic is plugged into body pack transmitter
- push mic power button
- turn Beacon POWER switch on
- make sure transmitter power switch is on
- set receiver and transmitter to same channel
- replace battery in transmitter

NEED MORE HELP? Beacon Sound System Setup & Operation Videos!
Visit Our Website: www.anchoraudio.com/beacon.php

ANCHOR AUDIO CUSTOMER SERVICE

888-444-6077

BEACON TECHNICAL SPECIFICATIONS

Rated Power Output	300 watts AC / 60 watts DC	Inputs	
Max SPL @ Rated Power	110 dB	Lo-Z Microphone	balanced, phantom powered, XLR
Battery	12 Volt rechargeable, 9.0 AH	Hi-Z Microphone	unbalanced, 1/4" phone
Frequency Response	60 Hz – 15 kHz ± 3dB	Line	Lo-Z balanced, 1/4" phone/RCA
Line Output (post fader)	isolated, 600 ohm, 1/4" phone	Sensitivity For Rated Output	
AC Power Reqs.	100 – 240 VAC, 50/60 Hz, 300W max	Lo-Z Microphone	-52 dBV (2.5 mVrms)
Dimensions (HWD)	26.25 x 11 x 18" / 66.7 x 28 x 45.7cm	Hi-Z Microphone	-43 dBV (7.5 mVrms)
Weight	45 pounds / 20 Kg	Auxiliary (line)	-14 dBV (200 mVrms)

(Specifications subject to change without notice)



Anchor Audio, Inc.

Portable Sound Systems • Torrance, California

For System Setup & Operation Videos Visit Our Website!
www.anchoraudio.com/beacon.php



BEACON

PORTABLE LINE ARRAY SOUND SYSTEM

OWNER'S MANUAL



CONTENTS

GETTING STARTED - WARRANTY INFORMATION	2
SETTING UP YOUR BEACON SOUND SYSTEM	2
CONTROLLING FEEDBACK - BEACON TRAVEL DOLLY	3
SOUND SYSTEM ACCESSORIES	3
BEACON SOUND SYSTEM BASIC OPERATION - OPENING & CLOSING THE LINE ARRAY	4/5
USING THE EXTERNAL AUDIO INPUT JACK	6
OPERATING THE BUILT-IN UHF WIRELESS RECEIVER	6
OPERATING THE WIRELESS MICROPHONE/TRANSMITTER	7
HAVING TROUBLE W/ YOUR SOUND SYSTEM?	8
BEACON TECHNICAL SPECIFICATIONS	8

A MESSAGE FROM THE OWNER

Thank you for choosing an Anchor Audio portable sound system. Our products incorporate state-of-the-art design and the finest quality of materials and workmanship. We are proud of our products and appreciate the confidence which you have shown by selecting an Anchor system.

I hope you'll take a few minutes to review this manual. We've incorporated several unique features into our products, and your knowledge of how to use them will enhance the performance and your enjoyment of the system.

David Jacobs, President
on behalf of all Anchor Employees

GETTING STARTED

Please check your new unit carefully for any damage which may have occurred during shipment. Each Anchor product is carefully inspected at the factory and packed in specially designed boxes for safe transport.

Notify the freight carrier immediately of any damage to the shipping box or product. Repack the unit in the original box and wait for inspection by the carrier's claim agent. Notify your dealer of the pending freight claim.

NOTE: All damage claims must be made with freight carrier!

RETURNING SYSTEMS FOR SERVICE OR REPAIR

For service or repair, please contact the dealer you purchased your system from or Anchor Audio Customer Service at (888) 444-6077 to obtain a RA (*Return Authorization*) number. All shipments to Anchor Audio must include an RA number and must be shipped prepaid. C.O.D. shipments will be refused and returned at your expense.

IMPORTANT: Save the shipping box & packing materials, they were specially designed to ship your unit!

WARRANTY REGISTRATION

Visit our website at www.anchoraudio.com and select "Warranty Registration". Complete the online form to activate the six-year limited warranty on your Beacon sound system and two-year limited warranty for the CD player and microphones.

BEACON MODELS AVAILABLE

BEA-6000

Full featured, AC/DC powered Beacon sound system

BEA-6000C

Beacon sound system w/ external CD player

BEA-6000U1

Beacon sound system w/ one built-in UHF wireless receiver

BEA-6000U2

Beacon sound system w/ two built-in UHF wireless receivers

BEA-6000CU1

Beacon sound system w/ one built-in UHF wireless receiver & external CD player

BEA-6000CU2

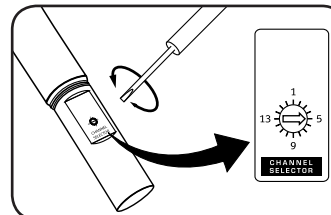
Beacon sound system w/ two built-in UHF wireless receivers & external CD player

NOTE: See page 6 for wireless microphones & accessories.

OPERATING THE WIRELESS MICROPHONE/TRANSMITTER

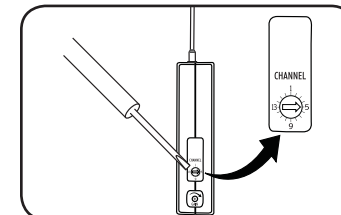
CHANNEL SELECTION - HANDHELD TRANSMITTER

1. Unscrew battery cover on bottom of microphone
2. Set the CHANNEL SELECTOR dial to match the channel setting of your receiver
3. Replace battery cover and tighten firmly



CHANNEL SELECTION - BODY-PACK TRANSMITTER

1. The channel selection dial is located on the side of the transmitter
2. Set the CHANNEL selection dial to match the channel setting of the receiver



NOTE: When using dual wireless, each microphone must be set to a different channel!

USING YOUR WIRELESS MICROPHONES

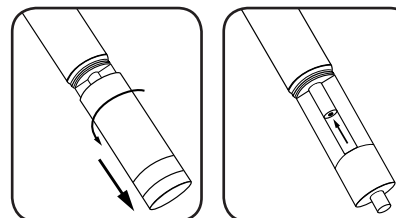
After you have set the transmitter channel (see above) you are ready to use your wireless microphone:

1. Body-pack transmitter users must insert the mic plug into the transmitter jack marked MIC
2. Turn the transmitter power switch to ON
(The red LED will flash when the mic is turned on. If the red LED stays on, the battery is low)
3. Turn the Beacon power switch to ON
4. The RX indicators will light (*only one indicator will light at a time*) when the wireless signal is being transmitted and received

CAUTION: Harmful feedback may occur when walking in front of a sound system or speaker with a wireless microphone. Always point microphone away from speakers!

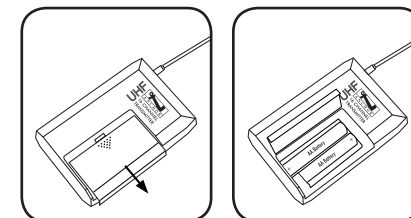
REPLACE BATTERY - HANDHELD TRANSMITTER

1. Unscrew battery cover on bottom of microphone
2. Replace old batteries with 2 fresh size 'AA' alkaline batteries
3. Replace battery cover and tighten firmly



REPLACE BATTERY - BODY-PACK TRANSMITTER

1. Slide open battery cover on front of transmitter
2. Replace old batteries with 2 fresh size 'AA' alkaline batteries
3. Replace battery cover by sliding firmly into place



NOTE: Transmitter power must be OFF when changing batteries!

USING EXTERNAL AUDIO

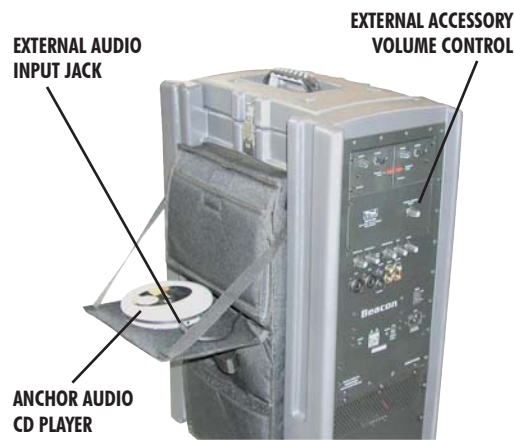
The External Audio Input Jack can be used to connect your Anchor Audio portable CD player, or other digital audio device, directly to your Beacon Sound System.

The volume level for these external devices is controlled with the External Accessory Volume Control located on the control panel.

ANCHOR AUDIO CD PLAYER

The Anchor Audio portable CD player is located in the accessory storage bag and comes already connected to the External Audio Input Jack so it's ready to play.

Operating instructions and warranty information can be found in the literature accompanying the CD player.



NOTE: For optimum sound quality set the CD player volume control to maximum & adjust playback volume w/ the External Accessory Volume Knob.

DIVERSITY WIRELESS BY ANCHOR AUDIO

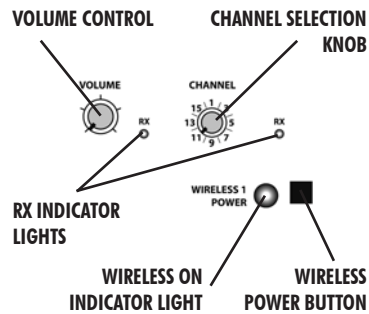
Anchor Audio UHF wireless is a 16 channel, diversity wireless system that receives signals with two independent antennae. With diversity wireless the receiver processes the stronger signal, effectively minimizing dropouts and interference from other transmitting sources. The antennae are mounted internally so there are no obstructions or risk of damage.

CHANNEL SELECTION - BUILT-IN RECEIVER

Select a channel, set the built-in receiver & microphone transmitter to that channel before using your wireless system.

1. Choose any available wireless channel/frequency from 1 thru 16 (see page 7 for transmitter instructions)
2. Set the Wireless Channel Selector Knob to the channel/frequency you choose in step 1

If you have two wireless receivers repeat above for the second receiver. Remember each receiver/transmitter pair must be set to different channels to avoid interference.



NOTE: Ongoing wireless interference? The frequency you selected may be in use by other systems in the area! Change channels until you find a clear frequency!

ANCHOR WIRELESS UHF TRANSMITTERS & MICROPHONES

WH-6000 - Handheld Microphone/Transmitter

WB-6000 - Body Pack Transmitter

Works w/ hands free microphones (mic not included)

Body Pack Transmitter Microphones:

CM-60 - Collar Microphone

Lightweight, low-profile mic

EM-60T - UltraLite Microphone

Hands free "Over-the-Ear" mic

LM-60 - Lapel Microphone

Lightweight, clip-on lapel mic

HBM-60 - Headband Microphone

Ultra-lightweight headband mic

CONTROLLING FEEDBACK

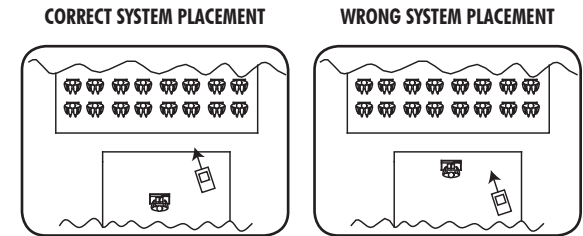
Feedback, a howling noise or shrill sound, is self-generated by the sound system. It's caused by a microphone picking up the sound coming from the speaker and then re-amplifying it. Once a feedback loop starts it continues until the system is adjusted.

FEEDBACK CAUSES

- Microphone too close, pointing towards or in front of speaker
- Volume setting is too loud for room
- Sound reflecting off hard surfaces

AVOIDING & ELIMINATING FEEDBACK

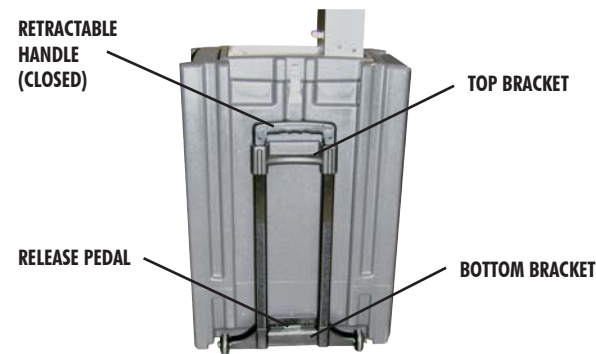
- Point microphone in a different direction
- Keep microphone away from the speaker
- Place speaker in FRONT of the microphone
- Reduce the sound system volume levels



CAUTION: Feedback can damage your equipment & may be hazardous to hearing.

BEACON TRAVEL DOLLY

Beacon Portable sound systems are equipped with a removable Travel Dolly that features wheels and a retractable handle. To eliminate possible vibration from affecting the performance of your unit we recommended that you remove the Travel Dolly before operating the system.



REMOVING TRAVEL DOLLY

1. Press & hold the spring-loaded Release Pedal located on the Bottom Bracket
 2. Swing the dolly bottom away from the system
 3. Lift Handle up to remove dolly from the Top Bracket
- Reverse steps to reattach the dolly.

NEED MORE HELP? Beacon Sound System Setup & Operation Videos!

Visit Our Website: www.anchoraudio.com/beacon.php

SOUND SYSTEM ACCESSORIES

MIC-90 - Handheld Wired Microphone

Dynamic, balanced, low impedance microphone w/ unidirectional pick-up pattern, mic "on/off" switch, 20' cable & mic clip

CD-EXT - CD Player

Portable CD player for use with the external audio input jack

HC-1660 - Hard Case

For travel or storage - holds one Beacon sound system

BASIC SYSTEM OPERATION

NOTE: Fully Charge Batteries Before First Use!

1. Before turning on your system remove the Travel Dolly (page 3) & open the Line Array (see below)
2. Set all Input Level Controls to minimum & Tones Controls to the flat or middle setting
3. Plug in a wired microphone (MIC 1 or MIC 2 jacks) and/or a separate audio source (LINE-IN jacks)
4. Set the Power Switch to "ON", the CHARGE INDICATOR LIGHT will come on (red light indicates the battery requires charging)
5. Adjust Level Controls for active Input Jacks to desired volume
6. Adjust sound quality w/ the BASS & TREBLE Tone Controls

IMPORTANT: Make all connections w/ shielded cables to avoid hum, buzzing or interference.

OPENING & CLOSING THE LINE ARRAY

OPENING BEACON LINE ARRAY

1. Open latches on top of unit
2. Lift array from base with handle
3. Turn array upside-down and place on top of base
4. Close side latches

IMPORTANT: Speaker grill MUST face forward!

5. Open array up completely until it locks into place

IMPORTANT: Latches MUST be locked for system to work!

CLOSING BEACON LINE ARRAY

1. Turn off power
2. Fold array (apply slight pressure)

IMPORTANT: Array MUST be folded down to open latches!

3. Open latches & lift off base
4. Turn array over & slide into base
5. Close & lock latches



WIRELESS RECEIVER 1 (see page 6)

VOICE OVER BUTTON

When pressed (button in) reduces the Line Input & CD Input levels by 12dB when any microphone is used. VOICE OVER will allow speakers to be heard over background music.

MICROPHONE LEVEL CONTROLS

1/4" PHONE & DUAL RCA LINE IN - INPUT JACKS

Jacks may be used simultaneously and can be combined w/ the mic inputs for a composite output - For playback of tape/CD player or other audio source.

UNIVERSAL MIC - INPUT JACKS

Balanced XLR - balanced low impedance mics, powers condenser mics. Unbalanced 1/4" - unbalanced high impedance mics, no phantom power.

LINE OUT - OUTPUT JACK

Balanced 1/4" - provides a combined output of all active system inputs. Record your presentation or connect to another powered sound system.

BATTERY LEVEL INDICATOR LIGHT

BATTERY LEVEL INDICATOR LIGHT

The Beacon Line Array sound system features a built in Battery Level Indicator Light that shows the battery level in three steps at power on.

- | | |
|--------------------------------------|---|
| 1. GREEN: Battery is fully charged | 3. RED: Battery level becoming low (system auto-shutoff in 15-30 minutes) |
| 2. YELLOW: Battery level is depleted | |

NEED MORE HELP? Visit Our Website - www.anchoraudio.com

BEACON SOUND SYSTEM CONTROL PANEL

Model Shown: BEA-6000CU2

WIRELESS RECEIVER 2 (see page 6)

EXTERNAL ACCESSORY VOLUME CONTROL

LINE IN LEVEL CONTROL

VOICE OVER BUTTON

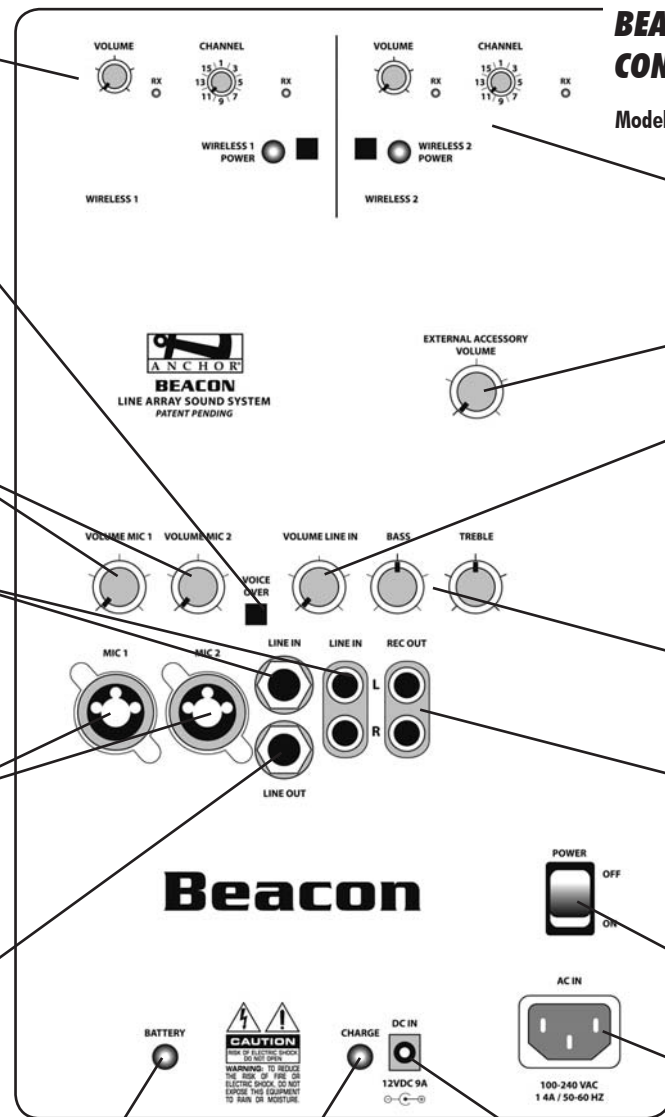
TONE CONTROLS - BASS/TREBLE

RECORD OUT

Composite output signal of all inputs. Use to record your presentation.

POWER SWITCH

AC POWER CORD INLET



CHARGE INDICATOR LIGHT

12V DC INPUT JACK

CHARGE INDICATOR LIGHT

The system is equipped with a built in rapid charger, designed to quickly charge and maintain the battery. If the Charge Indicator Light is:

- | | |
|---|--|
| YELLOW (flashing): Battery being tested (about 30 seconds when AC is connected) | GREEN: Battery is fully charged |
| YELLOW (solid): Battery is in good condition, rapid charging has begun | RED: Indicates battery fault, please call the Anchor Audio customer service department: (888) 444-6077 |