



HOW TO REPLACE YOUR MEGAVOX PRO BATTERY

Step by Step Instructions



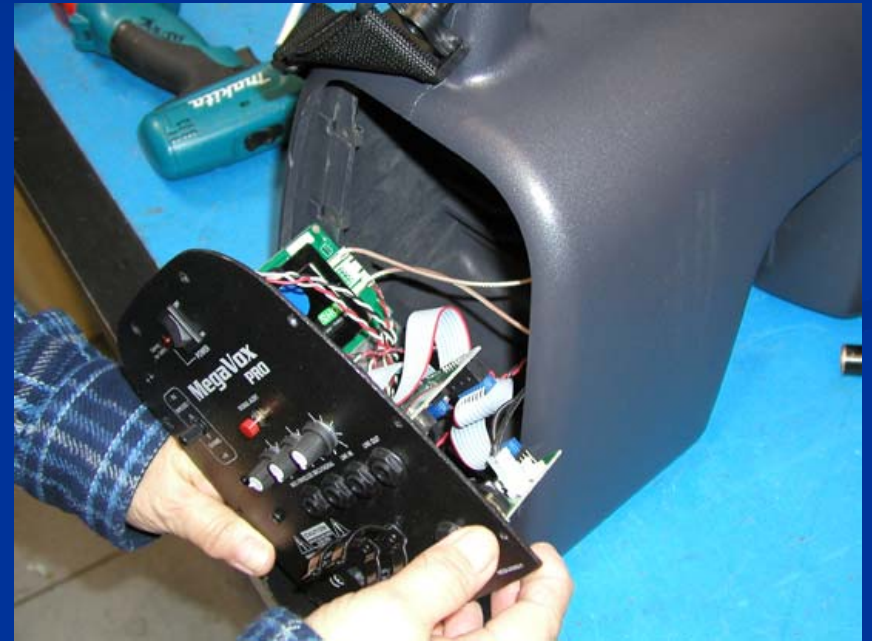
STEP #1

- Remove the 10 screws around the edge of the panel with the controls.



STEP #2

- Slowly separate the panel from the plastic case noting the harness location.



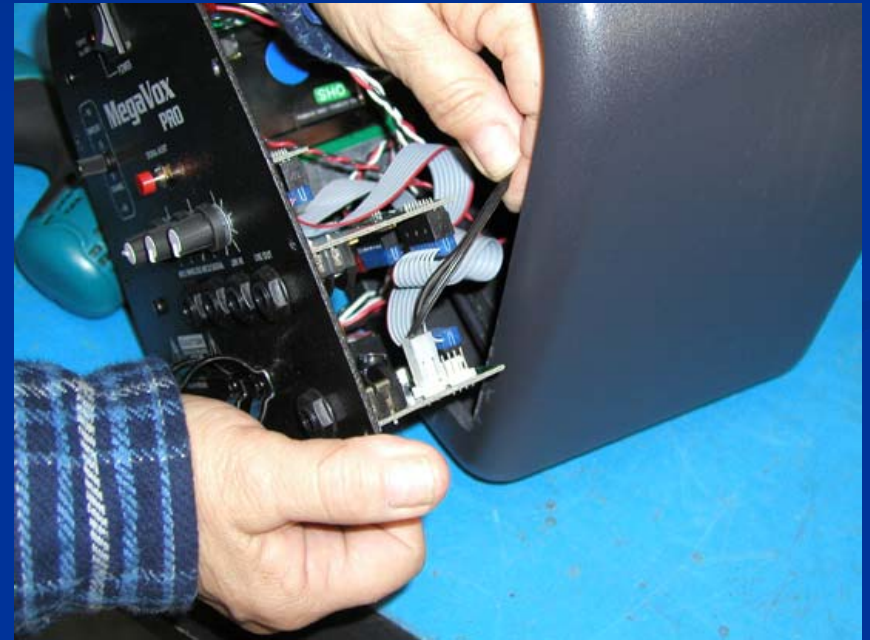
STEP #3

- If your unit has a wireless receiver, there will be a single white wire attached to the back of the speaker magnet with a single screw. If it is a Mega-Pro disconnect the two coax.



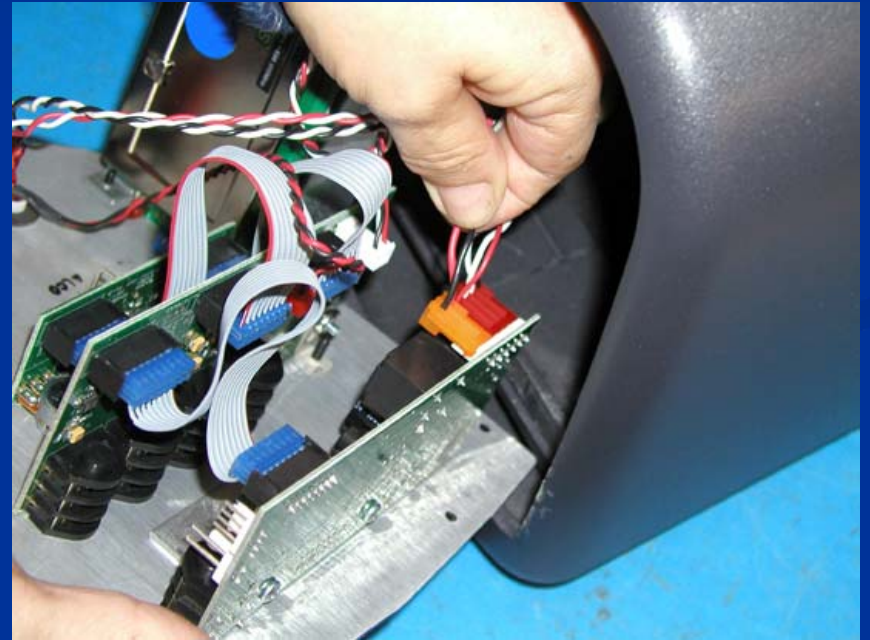
STEP #4

- Disconnect the harness from the speaker connected to the circuit board.



STEP #5

- Disconnect harness with the black and red wire from the circuit board. This is your battery connection.



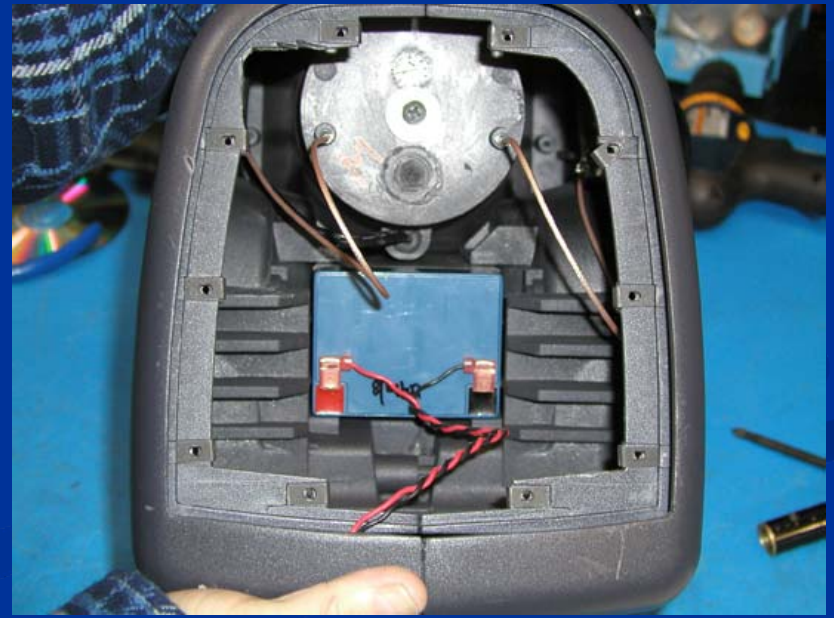
STEP #6

- Remove the two large Phillips screws found on both sides of case.



STEP #7

- Inside the case, lift the silver battery bracket up and out of the case.



STEP #8

- Take the case with the horn pointed toward the ceiling and drop it from about 2 inches onto a firm surface to jar the battery loose.



STEP #9

- Remove any tape or padding from the battery area and reverse the process and the unit should be functional.

Battery Specs:

- BATTERY 12V LEOCH# DJW12-5.4AH (12volt 4AH is OK)
- 90MM X 70MM X 102MM - MEGA-BAT

STEP #10

- Charge the unit fully before the next usage.

STEP #11

- If all else fails, contact Anchor for assistance
- Tel: 1-800-262-4671
- Email: sales@anchoraudio.com



Anchor Audio Portable Sound Systems

THANKS FOR WATCHING