



HOW TO REPLACE YOUR LIBERTY BATTERY

Step by Step Instructions



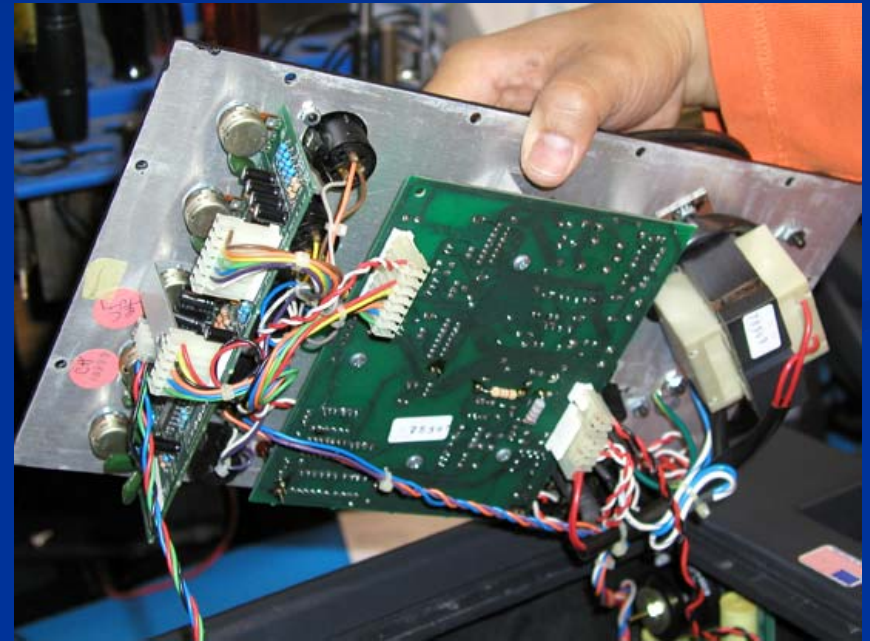
STEP #1

- Remove screws around the edge of the back panel only.



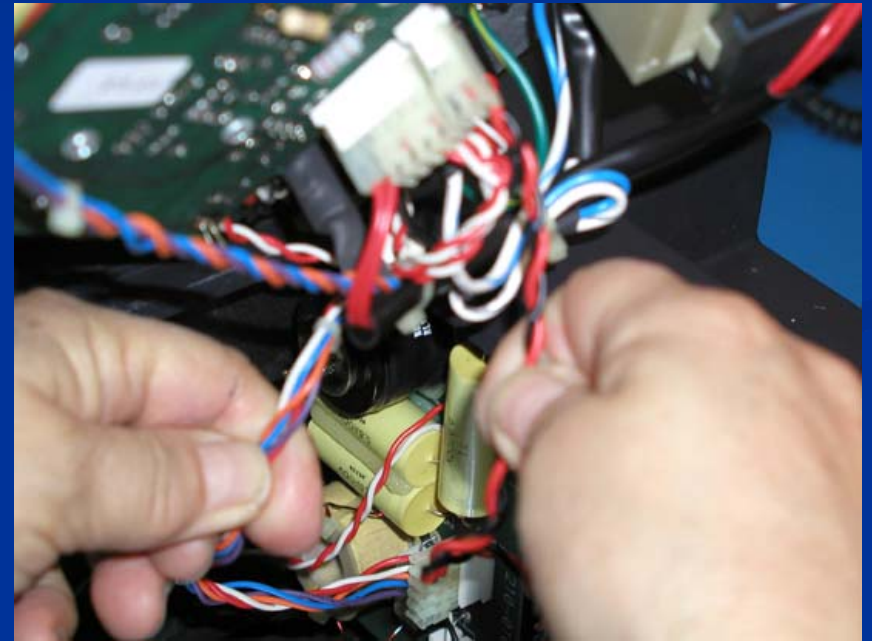
STEP #2

- Pull panel away from case, only far enough to remove fiberglass insulation and determine harness connections.



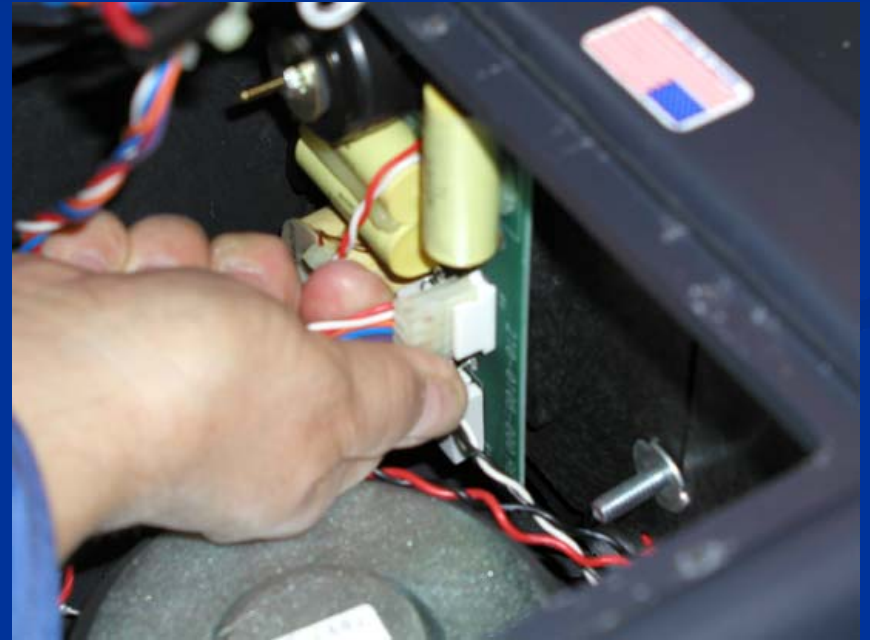
STEP #3

- Label and disconnect the two wire harness coming from the bottom of the speaker cabinet and going to the large square shaped board in the middle of the panel. Note its position and polarity.



STEP #4

- Disconnect the harness coming from the speaker output jacks going to the small board in the bottom of the cabinet.



STEP #5

- If you have options in the top of the cabinet, label and disconnect the harness coming from the top portion of the cabinet to the top board in the back panel. Note its connection.



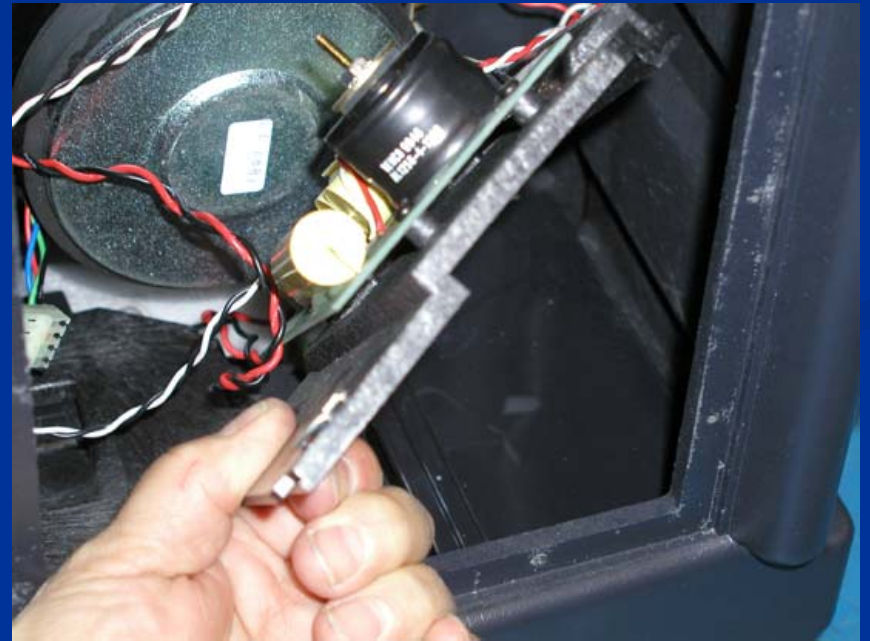
STEP #6

- Put the speaker on its face and remove the three large Phillips head screws found on the bottom outside of the case.



STEP #7

- Set the unit back up and remove the left hand plastic cover and the cover with the small board on it. Note the speaker connections and battery placement.



STEP #8

- Write down the battery voltage, current and size.
 - Notice, there are 2 batteries of equal size installed.
1. 151mm X 65mm X 94mm
12V 7-9AH PN LIBH-BAT
 2. 134mm x 67mm x 60mm
12V 2.6-3AH PN 205-0002-000

STEP #9

- Note how the batteries are connected and their placement.



STEP #10

- Reverse the process after installing new batteries.



STEP #11

- If all else fails, contact Anchor for assistance
- Tel: 1-800-262-4671
- Email: sales@anchoraudio.com



Anchor Audio Portable Sound Systems

THANKS FOR WATCHING